



June 2022



BOONE COUNTY 4-H CLOVER EXPRESS



4-H is for YOU
Join Today!
 Extension
University of Missouri



Ryan Smith
 Youth Program Associate
 Boone County
 ryancsmith@missouri.edu



Christal Huber
 County Engagement Specialist
 in 4-H Youth Development
 Boone/Howard County
 hubercd@missouri.edu

What's Inside?

- Missouri 4-H Trivia.....2
- Boone County Fair Dates.....3
- Boone County Fair Junior
Superintendents.....4
- 4-H at the MO State Fair.....5
- Vote on 4-H State Council
Executive Officers.....6
- Biosecurity Workshop.....7
- MO 4-H Shooting Sports
Calendars8
- 4-H Sportfishing Slam.....9
- MFA Saddle Award.....9
- 4-H Crop Scouting Event.....9
- Shoot, Share, Win.....10
- 4-H Zoo Apprentice Day
Camp.....10
- State Shoot Dates.....11
- 4-H Poultry Update:
HPAI.....12
- 4-H on Canvas.....13
- 2021-22 Missouri State 4-H
Calendar.....14
- Missouri 4-H Trivia
Answer.....15
- Contact Us.....16

What 'H' word in the 4-H Pledge is used for Better Living?

A.Head

B.Hands

C.Heart

D.Health

SAVE
the
DATE



THE BOONE COUNTY FAIR
July 19 - 23, 2022

Junior Superintendent's Needed!

**Looking for responsible and hard working
4-H'ers 13 and older who would be interested in
helping this year as a Junior Fair Superintendent
at the 2022 Boone County Fair in the Visual Arts
Building.**

**To be recognized as a Junior Fair Superintendent
you must work two days of the three days we'll be working.**

Dates are:

Saturday - July 16th - Fair setup

Sunday - July 17th - Fair entry

Sunday - July 24th - Project pickup

Please contact Brenda Wilsdorf at:

Phone: 573-289-5298

Email: bwilsdorf@centurytel.net

Deadline is July 5th, 2022

I will need your name, 4-H age and club you are with.

4-H at the Missouri State Fair

We are counting the days until the Missouri State Fair, August 11-21. Here are the latest notices and opportunities:

- **4-H Building guide**: make sure to consult this guide as you prepare projects for the fair, each year we have items disqualified from showing due to not following the guidelines.

Link here: <https://www.mostatefair.com/participate/livestock-building/building-exhibitors/4-h-ffa/>

- **4-H Livestock guide**

Link here: <https://www.mostatefair.com/participate/livestock-building/livestock-exhibitors/4h-ffa-livestock-sale-champions/>

- **4-H Building Demonstrations**: Demonstrations must have been selected at the county level to present at the State Fair. 4-H Staff must approve general and working demonstration in 4-H Online as close to July 15 as possible – registration opens in 4-H Online June 1. More details can be found in the 4-H Building Guidelines.
- **4-H Building Specialty Contests**: Register in 4-H Online starting June 1
 - Chicken BBQ**: Contestant's barbecue skills as demonstrated while preparing/cooking the chicken, and by judges' sensory evaluation of the finished product.
 - Cooking with Honey demonstrators** must use honey grown or made by a Missouri honey producer or company; provide the honey producer or company's name; give nutrition information; the health benefits of honey and the benefits of pollinators. The demonstrator must present a finished product for judges' sampling and a recipe handout for the judges.
 - Missouri Grown Foods demonstrators** must use a food product grown or made by a Missouri producer or company; provide background information on the producer or company, nutrition and preparation information, and the economics of the food product and the final dish. The demonstrator must present a finished product for judges' sampling and a recipe handout for the judges.

Vote for State 4-H Council Executive Officers

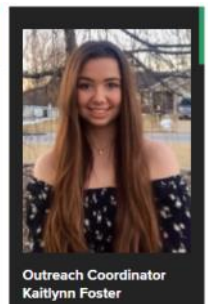
Congratulations to the following individuals who have been selected through written application and interview for the Executive Officer position candidates. Their names will appear on the ballot for all Missouri 4-H members (ages 14-18) to vote through our 4-H Online system. Voting will open Monday, May 30, 2022 at 8 AM and close on Thursday, June 2, 2022 at 5 p.m.

To vote:

- Log in to 4-H Online: <https://v2.4honline.com/>
- Choose the appropriate family member's name and "register" for the event called **State 4-H Council Elections**
- Note: the event will only be open during the time specified above. You will not be able to see it before that time.

To watch the campaign videos, please visit the State 4-H Council's webpage. See link below:

[https://extension.missouri.edu/programs/missouri-4-h/get-involved-with-4-h/state-4-h-council?
fbclid=IwAR1S1nEQSnMMymI8_Ta_bFAaGzhArFcHrD2wYOgZmnb3wx
ZWo3xlr3Fcg1c](https://extension.missouri.edu/programs/missouri-4-h/get-involved-with-4-h/state-4-h-council?fbclid=IwAR1S1nEQSnMMymI8_Ta_bFAaGzhArFcHrD2wYOgZmnb3wxZWo3xlr3Fcg1c)





Biosecurity Workshop



A hands-on educational opportunity for any 4-H or FFA member to discover all things biosecurity!

Featuring:

Dr. Cory Bromfield

MU Extension Swine Veterinarian

Brenda Schreck

CES in Livestock and Youth Development



Friday, June 10, 2022

8:30 am - 10:00 am

Greenley Research Center

64399 Greenley Place

Novelty, MO 63460

Registration Required

A virtual option will be available, see registration for details. Interested members can register for this free workshop under events in 4-H Online: <https://v2.4honline.com>. Search in the events section of 4-H Online for "Livestock Biosecurity Workshop".

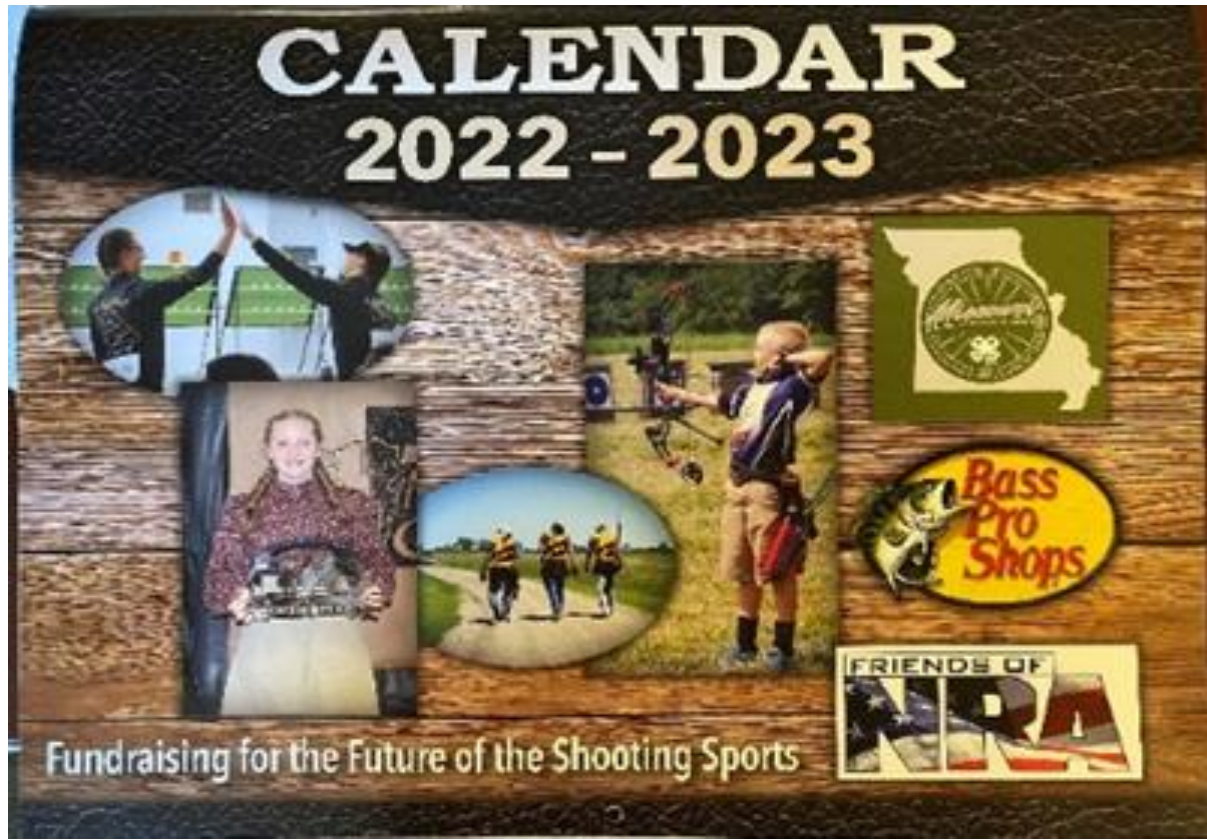
With questions, please contact Brenda Schreck, MU Extension County Engagement Specialist in Livestock and 4-H Youth Development at 573-767-5273 or SchreckB@missouri.edu



Issued in furtherance of the Cooperative Extension Work Acts of May 8 and June 30, 1914, in cooperation with the U.S. Department of Agriculture. Director, Cooperative Extension, University of Missouri, Columbia, MO 65211 • MU Extension provides equal opportunity to all participants in extension programs and activities and for all employees and applicants for employment on the basis of their demonstrated ability and competence without discrimination on the basis of race, color, national origin, ancestry, religion, sex, sexual orientation, gender identity, gender expression, age, genetic information, disability or protected veteran status. • 573-882-7216 • extension.missouri.edu

Missouri 4-H Shooting Sports

Fundraising calendars are HERE!



Contact your local shooting sports member to purchase your raffle packet today! Help support #MO4HShootingSports! Calendars are available at the Boone County Extension Office!

4-H Sportfishing SLAM

Open to all 4-H members

All participants must register for the SLAM in 4-H Online.

There is **no cost** to participate, and entries are accepted March 1 – June 1, 2022.

Once registered, you will automatically receive an email containing SLAM details and the link for submitting entries.

Use this link for more details:

<https://extension.missouri.edu/programs/missouri-4-h/4-h-projects-opportunities/4-h-opportunities/4-h-sportfishing-slam>



MFA Saddle Award

Youth ages 14-18 who are enrolled in the horse project may apply for the MFA Saddle award. Applications are due July 1.

For more information and details on how to apply, use link below:

<https://extension.missouri.edu/programs/missouri-4-h/4-h-projects-opportunities/4-h-opportunities/horse-awards>

4-H Crop Scouting Event

NEW IN 2022

Tuesday, July 19, 2022

Bradford Farm, Columbia, MO

- Registration open in 4-H Online June 1 to July 1
- \$25 per youth. No cost for volunteers.
- Youth and volunteers planning to attend must register in 4-H Online

Attendees will hear from State Extension Specialists and have a chance to broaden and test their knowledge and skills relating to crop scouting by visiting and completing a challenge at stations focusing on insects, diseases, soybean stages, corn stages, disorders, weeds, and pesticide safety.

Use link below, for more information:

<https://extension.missouri.edu/programs/missouri-4-h/4-h-projects-opportunities/4-h-opportunities/4-h-crop-scouting>



SHOOT ● SHARE ● WIN

Sponsored by the Missouri Department of Agriculture, the Focus on Missouri Agriculture photo contest is open to Missouri photographers of all ages. Participants may enter up to three photos in each of the five categories. The photo contest categories are Beauty of the Farm, Faces of the Farm, The Farmer's Life and Pride of the Farm. Children's Barnyard, a special category for budding photographers ages 12 and under, is back again this year.

Deadline to enter is June 10.

Use this link for more information: <https://agriculture.mo.gov/focus/>

4-H Zoo Apprentice Day Camp

- Various dates, Dickerson Park Zoo, Springfield, MO
- Jr. Zoo Apprentice Camp – ages 11-13.
- Sr. Zoo Apprentice Camp – ages 14-18.
- Registration for June camps opens May 1.
- Registration for July camps opens June 1.
- Deadlines vary based on camp date.
- For more information, use link below:
- <https://extension.missouri.edu/programs/missouri-4-h/4-h-projects-opportunities/4-h-opportunities/4-h-zoo-apprentice-day-camp>

4-H ZOO APPRENTICE DAY CAMP

Jr. Camp Dates	Registration Deadline
June 13	May 30
June 26	June 12
July 10	June 26
July 21	July 7

Sr. Camp Dates	Registration Deadline
June 18	June 4
June 29	June 15
July 17	July 3

Jr. Zoo Apprentice Camp - ages 11-13
Sr. Zoo Apprentice Camp - ages 14-18

June camps open in 4-H Online May 1.
July camps open in 4-H Online June 1.
Deadlines vary based on camp date.

Spots are limited!
Cost: \$165



State Shoot Dates Set

PLEASE NOTE: THERE HAVE BEEN DATE AND TIME CHANGES—PLEASE READ UPDATED RULES! USE LINK BELOW:

https://extension.missouri.edu/media/wysiwyg/Extensiondata/Pro/4h/Docs/Opportunities/ShootingSports/SSRules_2022.pdf

Opportunity	Date	Reg Opens	Reg Closes	Location
State Shoot: Skeet	August 13	June 1	Aug 1	Gateway Gun Club, Hazlewood
State Shoot: Trap	Aug 27	June 1	Aug 1	Mo Trap shooters Assoc, Linn Creek
State Shoot: Archery 300	August 27-28	June 1	Aug 1	Prairie Grove, Columbia
Western Heritage State Contest	Sept 10-11	June 1	Aug 15	Dysart Memorial Range in Marshall
State Shoot: Everything else	Sept 17-18	June 1	Sept 1	Various locations TBD
State Shooting Sports Award Ceremony	Tentatively 3 rd weekend of Oct	No registration		Mathewson Arena on the Mo State Fairgrounds in Sedalia

4-H Poultry Project: Highly Pathogenic Avian Influenza (HPAI)

With confirmed highly pathogenic avian influenza cases in Missouri, the Missouri Department of Agriculture encourages both commercial and back yard flock owners to enhance their biosecurity plans and obtain premises ID numbers. Learn more about avian influenza and the steps you can take to protect your flock here:

<https://agriculture.mo.gov/avian-influenza.php>

4-H on Canvas

Don't forget to re-register for 4-H On Canvas!

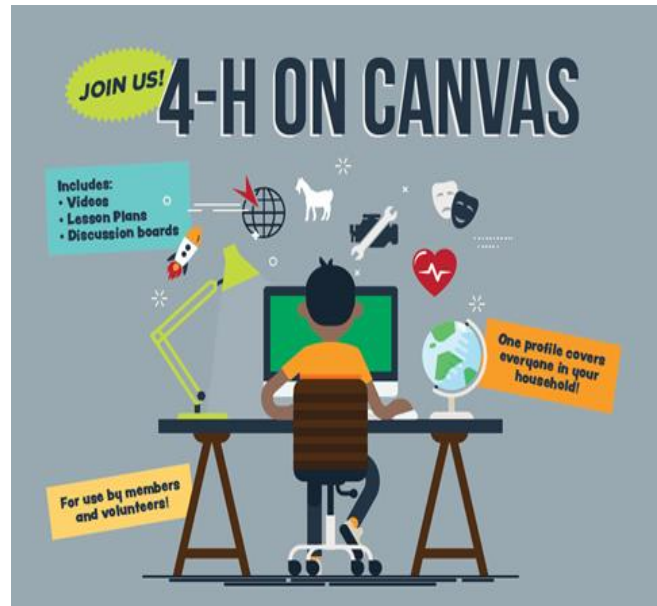
Canvas is an online learning system that allows us to create modules for multiple project areas in one place. Project areas have videos, lesson plans and opportunities to connect on discussion boards to extend our project learning beyond our face-to-face meetings. This additional format will:

- Supplement what you are doing locally
- Fill in when project leaders can't be found
- Allow meetings to happen if you cannot gather

4-H on Canvas includes videos, lesson plans, and discussion boards. One profile covers everyone in your household!

For use by members and volunteers! Set up ONE profile for your entire household for \$5.00 to access ALL project areas. Scholarship funds may be requested. You will use any active member/volunteer in your household in 4-H Online to register for an event titled "4-H Goes Online – It's Project Time!" This course can be used by club leaders, project leaders and 4-H members alike. If clubs or project groups would like to establish their own groups within the course, please email the Missouri 4-H Canvas Manager at 4hcanvassupport@missouri.edu to do so. Please note: if you do not create your own group, what you post will be shared with Missouri 4-H Statewide within this course. This course is not intended to be mandatory, rather an alternative method for project meetings/resources.

CANVAS NOTE: Due to a platform move, sometime in December you will notice that Canvas looks different. We are working hard with MU to make that transition seamless. The content in Canvas will remain the same—it will just look a bit different.



2021-2022 State Calendar

Event	Date(s)	Registration
NOTE: This chart reflects the current plan. Occasionally, situations beyond our control force us to move or cancel an event. Changes will be broadcast on social media, newsletters, and emailed to those already registered.		
Sportfishing SLAM	March 1 - June 1	No Registration
Dairy Cow Camp	May 25-27	Complete
Missouri 4-H Week		
State 4-H Teen Conference	May 31-June 1 (noon to noon)	Complete
4-H Explorers (NEW)	June 1-2 (noon to noon)	Complete
State 4-H Congress	June 2-3 (noon to noon)	Complete
Poultry Day	June 11	Complete
State Sportsfishing Contest	June 25	Complete
Shooting Sports National Championships	June 26—July 1	
Citizen Washington Focus Trip	July 1-11	Complete
MFA Saddle Award Application		Due July 1
Missouri 4-H Career Pathways Conference	July 18-21	
4-H Crop Scouting	July 19 (Tuesday)	June 1—July 1
FilmFest	Tentatively 1 st weekend in Aug.	
Western Heritage National Conference	July 26-28	
Missouri State Fair	August 11-21	
4-Her Demonstrations in 4-H Building		June 1—July 15
State 4-H Dairy Judging Contest	August 20	
State Shoot: Skeet	August 13	Jun 1—Aug 1
State Shoot: Trap	Aug 27	Jun 1—Aug 1
State Shoot: Archery 300	August 27-28	
Western Heritage State Shoot	Sept 10-11	Jul 15—Aug 31
State Shoot: Everything Else	Sept 17-18	Jul 15—Aug 31
State 4-H Public Speaking Contest	Sept 24	
State Livestock Judging Contest	Sept 10	August 1—Sept 1
State Fashion Revue	Oct 8	
State Shooting Sports Award Ceremony	Oct 15	No registration
Shooting Sports State Team Tryouts	Various weekends Sept-- Dec	

What 'H' word in the 4-H Pledge is used for Better Living?

A.Head

B.Hands

C.Heart

D.Health

University of
Missouri Extension
Boone County

w

1012 N. Hwy UU

Columbia, Mo. 65203

573-445-9792

BooneCo@missouri.edu

Newsletter Deadline

Club information, meeting
schedules, or anything
else you want published in
the newsletter must be
emailed to the Extension
Office by the 25th of the
month



University of Missouri Extension does not discriminate on the basis of their race, color, religion, sex, sexual orientation, national origin, age, disability in employment or in any program or activity.